



B53 BLUELIFT

ReachMaster launched the Bluelift line in North America in 2010, and since then this line of track-based compact aerial lifts has continued to set one record after another:

The first manufacturer in the world to

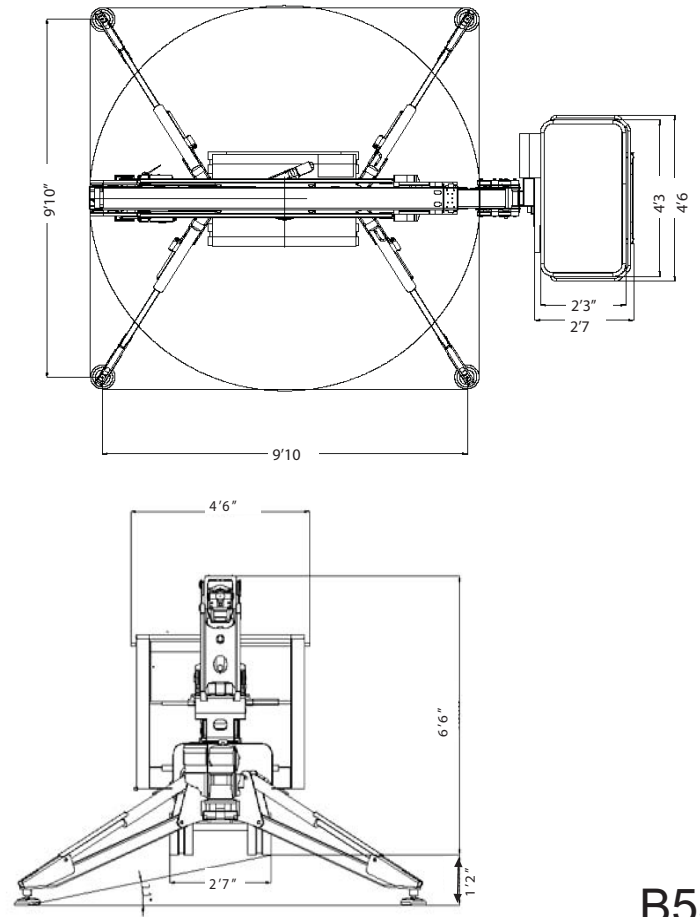
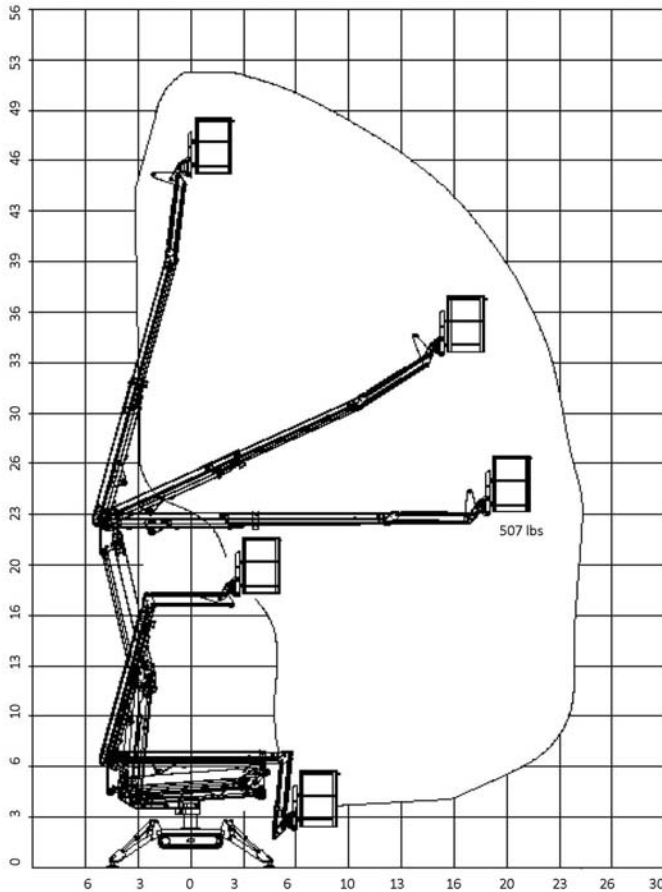
- offer a 72 ft. work height unit with an overall length of less than 15 ft
- feature a true hybrid option with combined lithium and combustion engine in this class of units
- offer the most narrow units in its class
- auto centering of boom, go-home features and many more operator aid functions

The latest new feature is an innovative electro-hydraulic system that will allow the operator to use two independent functions at the same time.

With working heights from 35 – 101 ft., single and double door access combined with hybrid power solutions, the Bluelift line offers an unmatched range of versatile lifts that can be used in- and outdoor. Applications such as general rental, window cleaning, building maintenance and tree care are just a few of the many tasks where the Bluelift line will offer a superior, safer and more efficient solution.

Model	B53
Working height	52' 6"ft
Basket height	47ft
Max outreach	24ft3in (507 lbs)
Basket load	507lbs
Basket dims	4ft3in x 2ft3in
Basket rotation	+/-90°
Turret rotation	340°
Height	6ft6in
Length (w/o basket)	12ft3in
Length (w/ basket)	14ft5in
Width (w/o basket)	2ft7in
Footprint	9ft10 in x 9ft10in
Weight (approx)	4,190 lbs
Max pressure, tracks	8.3psi
Max pressure, footplate	65.4psi
Track size (per track)	44in x 6½in
Foot pad size (per pad)	48½sq in
110V drive motor	Standard
Honda, iGX390	Standard
Hatz diesel engine	Option
Lithium battery	Option

We reserve the right to alterations



B53 BLUELIFT

Standard Equipment

- Automatic stability & outreach control
- 180° (+/-90°) basket rotation
- Non marking tracks
- Air/water to the basket
- 110V to basket
- Self propelled
- 110V drive motor
- Honda iGX390 engine
- 340° non cont. turret rotation
- Manual pump for emergency lowering
- Width of only 2ft7in
- 2 person basket
- Cable Remote Control
- Automatic turret center stop

Optional Equipment

- Adjustable tracks
- Hatz diesel engine
- Lithium Battery
- Hetronic radio remote
- Go-home function
- Custom paint

Additional Specifications

Boom angle	0°/ +75°
Oil tank capacity	8gal
Max windspeed	28mph
Operating speed	0.9mph
Travel speed	0.9mph
Drive gradability	15°/28%
Set-up gradability	10°/18%



Ruthmann Reachmaster N.A. LP
Toll Free: 866-358-7088
www.ruthmannreachmaster.com