



COLLAR CONFIGURATIONS



QUICKGRIP™ COLLAR

Our new patent-pending **QuickGrip** collar secures to any HVAC unit quickly and efficiently, no tools required. It's our most universal and secure collar option.





BENEFITS OF NORSEMAN'S NEW QUICKGRIP COLLAR:

- Developed to offer the securest connection.
- Revolutionary technology; sleek, minimal one-piece design snugly wraps virtually any HVAC unit for a fast and secure connection.
- Wide-mouth buckle funnel helps you guide the ratchet collar for an ultra-fast, precise bite of your buckle that can be adjusted quickly.
- Buckles offer quicker engagement, faster tongue uptake and fewer cranks to tighten your collar, for vastly improved speed, connection and ease of use.
- Years of development in each crank of the ratchet. Crank it forward for a more secure connection.
- Quick-release technology allows for fast attachment to and release from the unit independently and without the use of tools.
- Universal collar fits virtually every HVAC unit on the market.
- Patent pending in the USA and Canada, and available only from Norseman Protective Solutions.

In-stock, ready to ship from one of our distribution locations.

Norseman's Collar Configurations are **GEAR2PERFORM.**

NORSEMAN, YOUR ONE-STOP SUPPLIER OF **GEAR2PERFORM.**

-  **On-Demand Supply:** Warehousing space and distribution locations across North America.
-  **Exceptional Service:** One-stop supplier of Fabric, Foam and Film Protective solutions.
-  **Superior Quality:** Manufacturing in North America since 1921.
-  **Extensive Experience:** Our Fiercely Reliable™ team will find a solution to fit your business.

Contact Norseman or your local Sales Representative to order today.

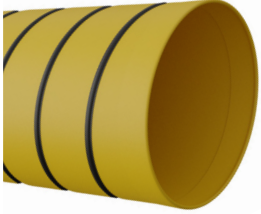
GEAR2
PERFORM

CANADA 1.800.268.1918 NORSEMAN.CA

USA 1.844.667.7362 NORSEMANUSA.COM



COLLAR CONFIGURATIONS



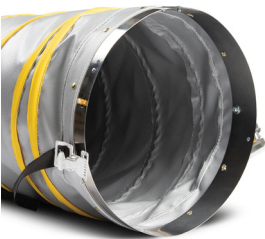
WIRE-RING

A wire ring is incorporated and encased into the fabric, providing a round, rigid structure to the duct opening and allowing for easy and universal duct-to-duct connectivity.



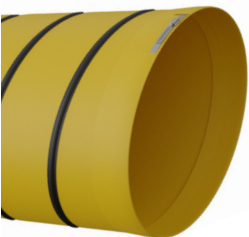
BELTED-CUFF

Fabricated using the same fabric as the portable ducting it is attached to, the belted cuff is incorporated into the duct's collar and finished with a metal spring buckle.



PIN-LOCK

A pin-lock end is a metal band collar with spring-loaded pins on one end, allowing for secure connectivity to a metal band collar with holes on the adjoining duct. The spring-loaded pins snap into the fixed holes, fastening the ducts for a secure fit.



GEAR-CLAMP

Ideal for securing ducting to portable ventilation units, our gear-clamp collars feature solid-steel construction, a quick-release handle and adjustable options for varying diameters.

Not a standard production item—available for custom ducting orders.



VELCRO

With exterior Velcro flaps that wrap around the connection point, this collar design offers operators quick and efficient fastening and better control of the connection's tightness.

Available only on our unstructured Evenair Diffusion Ducts.

To learn more about Norseman and our gear, contact one of your local Norseman Sales Representatives or visit our website.

CANADA 1.800.268.1918 NORSEMAN.CA
USA 1.844.667.7362 NORSEMANUSA.COM