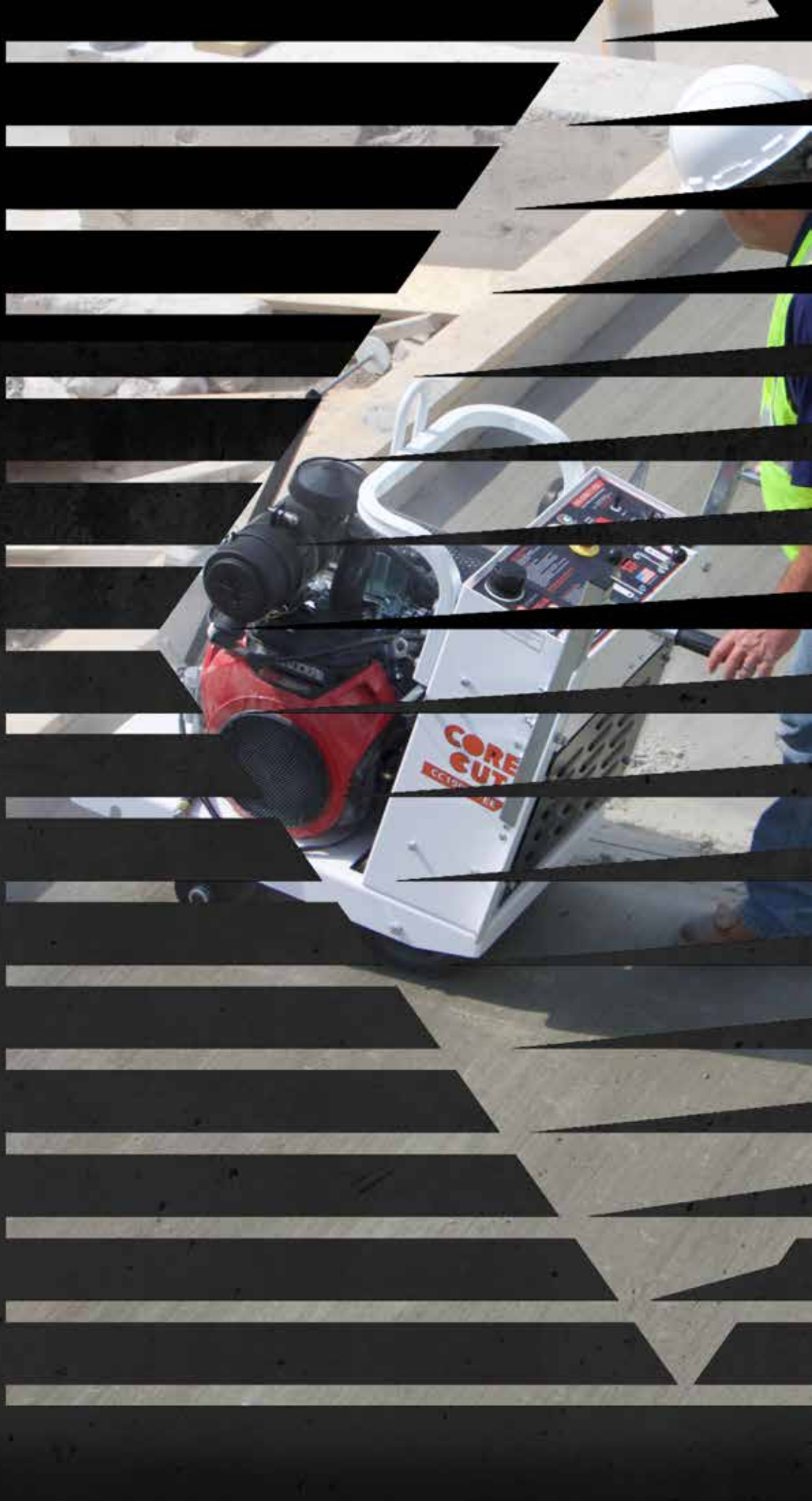




**FIRST-CUT**  
EARLY ENTRY PRODUCTS



DIAMOND PRODUCTS LIMITED  
333 Prospect St., Elyria, OH 44035  
U.S.A.

800-321-5336  
[diamondproducts.com](http://diamondproducts.com)

# FIRST-CUT SAWS



## CC150XL-EE

**LIGHT WEIGHT  
& PORTABLE**



2.5HP  
Baldor Electric

4.8HP  
Honda Gas

Telescoping handle adjusts  
to operator's height

Includes  
vacuum  
attachment  
guard plate

Up-cut design



MADE IN THE  
U.S.A.

6.5" Blade Capacity

Gasoline

Electric

### FEATURES

- Reliable skid plate system for green concrete
- Heavy duty design but light weight enough for two people to lift
- Fully adjustable handle bars for operator comfort
- Cyclone air filter for increased air flow (Honda models)
- Five wheels under the frame for increased stability
- Up-cut design to keep debris from going back in the cut
- Blade raise/lower mechanical mechanism with spring loaded release
- Single ribbed drive belt

### SPECIFICATIONS

Max. Depth of Cut	1.5" with 6.5" diameter blade
Blade Shaft RPM	4020
Blade Shaft Diameter	1.250"
Arbor Size	1"
Dimensions	49.22" Long, 21.80" Tall, 16.94" Wide
Depth Indicator	Standard

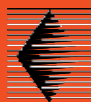
### CC150XL-EE EARLY ENTRY SAW

Model #	Engine Make/Model	Engine Power	Part #	Cat #	Product Weight (lbs)
CC125BXL-EE6	Baldor Electric	2.5 HP	5801357	07789	120
CC148HXL-EE6	Honda® GX160	4.8 HP, 7.6 Torque (lbs.-ft.)	5801345	32739	100
CC165BVXL-EE6	Briggs® Vanguard	6.5 HP	5801346	32747	105
CC165LXL-EE6	Lifan® LF168F	6.5 HP	5801347	32755	100

Horsepower as rated by the engine manufacturer.

### CC150XL-EE OPTIONS

Description	Part #	Cat #
Vacuum attachment guard cover	6040775	81879



# CC190PRO-EE

## PROFESSIONAL GRADE PERFORMANCE



MADE IN THE U.S.A.

Spring loaded skid plate that keeps it down on the surface to help prevent spalling

Up-cut design

14" Blade Capacity

Gasoline

### FEATURES

- Capable of .110" to .250" thick blades
- Self propelled drive
- Raise and lower adjustable head duty handle bars
- Vibration dampeners that prevent rattling that disrupts the skid plate function
- Self aligning blade shaft bearings
- Easy access to battery with heavy duty isolator switch to prevent power drain
- Up-cut design to keep debris from going back in the cut
- Lifting hook for easy transport
- Optional vacuum side cover plate allows connection to vacuums
- Parking break standard



Use the Core Vac CV1900AV Vacuum for the CC190PRO-EE saw Includes Hoses.

### SPECIFICATIONS

Max. Depth of Cut	3.625" with 14" diameter blade
Blade Shaft RPM	3500
Blade Shaft Diameter	1.250"
Arbor Size	1" with single drive pin
Blade Raise/Lower	Electric actuation
Transmission	Eaton Model 6
Drive Speed	0-80 feet per minute
Dimensions	43.37" Long, 66.57" Tall, 25.5" Wide
Includes	Electric start, low oil alert and tach/hour meter

### CC190PRO-EE EARLY ENTRY SAW

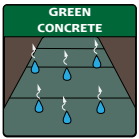
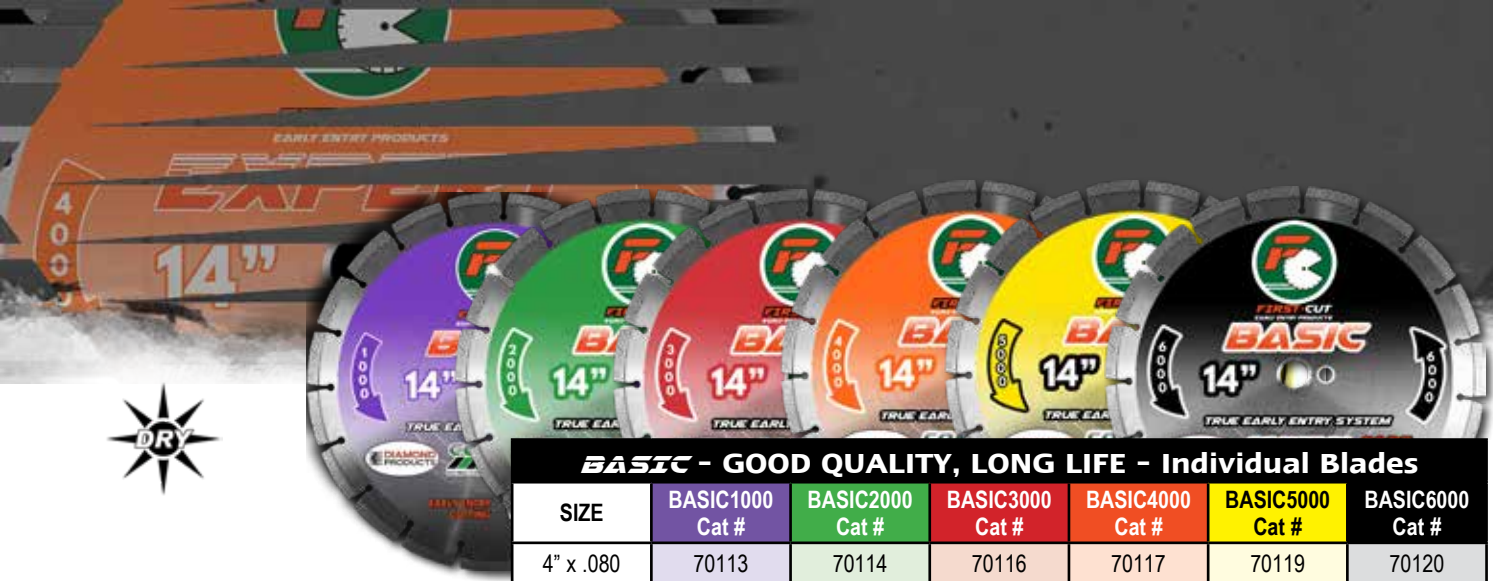
Model #	Engine Make/Model	Engine Power	Part #	Cat #	Product Weight (lbs)
CC190PRO-EE	Honda® GX630	20.8 HP, 35.6 Torque (lbs.-ft)	5801128	13364	420

Horsepower as rated by the engine manufacturer.

### CC190PRO-EE OPTIONS

Description	Part #	Cat #
CV1900AV dust containment vacuum for CC190PRO-EE with hoses - dry only	2505723	82095
Vacuum side cover plate for CC190PRO-EE blade block	2708358	80580
Vacuum adapter 3" to 5" (manifold assembly 1" - 3" port)	2504846	82102
Spot Light Kit	6047720	78751





**FOR USE ON  
FIRST-CUT™ OR  
COMPETITOR  
SAWS**

**BASIC - GOOD QUALITY, LONG LIFE - Individual Blades**

SIZE	BASIC1000 Cat #	BASIC2000 Cat #	BASIC3000 Cat #	BASIC4000 Cat #	BASIC5000 Cat #	BASIC6000 Cat #
4" x .080	70113	70114	70116	70117	70119	70120
6" x .100	63013	40544	40546	40547	63014	63016
8" x .100	63056	42938	42939	42943	63058	63063
8" x .125	63365	63371	63372	63373	63380	63381
10" x .110	63382	46593	46596	46599	63384	63388
10" x .250	63389	63390	63392	63396	63397	63404
12" x .125	63413	44970	44971	44974	63415	63416
12" x .250	63417	63419	63420	63421	63422	63423
13.5" x .125	63426	63427	63428	63429	63430	63437
13.5" x .250	63440	63441	63442	63446	63447	63449
14" x .125	63450	44976	44977	44978	63458	63464
14" x .250	63465	63466	63467	63468	63469	63470



**Packaged  
with  
Skid  
Plate**

**BASIC - GOOD QUALITY, LONG LIFE - with Skid Plate**

SIZE	BASIC1000 Cat #	BASIC2000 Cat #	BASIC3000 Cat #	BASIC4000 Cat #	BASIC5000 Cat #	BASIC6000 Cat #
6" x .100*	64125	64132	64133	64134	64135	64136
8" x .100	64163	64166	64167	64185	64206	64207
8" x .125	64234	64235	64236	64237	64238	64242
10" x .110	64271	64273	64274	64275	64276	64282
10" x .250	64335	64338	64341	64344	64345	64348
12" x .125	64376	64378	64379	64384	64387	64388
12" x .250	64439	64441	64442	64443	64447	64448
13.5" x .125	64471	64473	64474	64479	64482	64485
13.5" x .250	64516	64518	64522	64526	64528	64530
14" x .125+	64546	64547	64550	64552	64553	64555
14" x .250+	64573	64579	64580	64581	64582	64583

\* For use on the First-Cut CC150XL-EE saw. + For use on the First-Cut CC190PRO-EE saw.



**Includes 1"  
arbor with  
drive-pin hole  
and triangle  
knock-out**

Consider the aggregate in your area and cure time before determining the bond specification

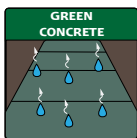
Color codes do not refer to the aggregate map color codes found at the front of this book..

SPECIFICATIONS	
Specification	Aggregate
1000-Purple	Very Hard
2000-Green	Hard
3000-Red	Medium Hard
4000-Orange	Medium
5000-Yellow	Medium Soft
6000-Black	Soft





# FIRST-CUT DIAMOND BLADES



**FOR USE ON  
FIRST-CUT™ OR  
COMPETITOR  
SAWS**

## EXPERT - VERY HIGH QUALITY, LONGER LIFE - Individual Blades

SIZE	EXPERT1000 Cat #	EXPERT2000 Cat #	EXPERT3000 Cat #	EXPERT4000 Cat #	EXPERT5000 Cat #	EXPERT6000 Cat #
6" x .095	66117	67330	57526	68407	69019	56798
6.5" x 100	90411	---	---	---	---	---
8" x .100	67332	67331	68352	68328	68380	68331
10" x .080	101117	---	---	---	---	---
10" x .110	68782	67318	55816	68498	51150	56801
12" x .080	101118	---	---	---	---	---
12" x .125	67326	67325	57524	68512	90673	52597
12" x .250	70590	68507	68590	68515	68475	70118
13.5" x .125	68438	67329	67898	69554	68378	69690
13.5" x .250	69159	70166	69328	69853	68434	68384
14" x .125	68394	68392	57525	68518	51156	51177
14" x .250	68521	70559	68526	68469	68351	69770



**Packaged  
with  
Skid  
Plate**

## EXPERT - VERY HIGH QUALITY, LONGER LIFE - with Skid Plate

SIZE	EXPERT1000 Cat #	EXPERT2000 Cat #	EXPERT3000 Cat #	EXPERT4000 Cat #	EXPERT5000 Cat #	EXPERT6000 Cat #
6" x .095*	64145	64147	64149	64150	64155	64156
8" x .100	64208	64210	64212	64216	64217	64218
10" x .110	64288	64289	64290	64293	64296	64298
12" x .125	64389	64390	64402	64417	64418	64419
12" x .250	64449	64451	64452	64453	64458	64460
13.5" x .125	64488	64489	64493	64494	64495	64498
13.5" x .250	64532	64533	64535	64541	64543	64544
14" x .125+	64557	64558	64559	64561	64562	64566
14" x .250+	64584	64585	64590	64597	64598	64599

\* For use on the First-Cut CC150XL-EE saw. + For use on the First-Cut CC190PRO-EE saw.

### SPECIFICATIONS

Specification	Aggregate
1000-Purple	Very Hard
2000-Green	Hard
3000-Red	Medium Hard
4000-Orange	Medium
5000-Yellow	Medium Soft
6000-Black	Soft

Consider the aggregate in your area and cure time before determining the bond specification

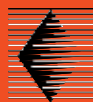
Color codes **do not** refer to the aggregate map color codes found at the front of this book..

### Joint Protectors

(50 per bag)

- 2" long x 1/2" wide x 1/8" thick
- Used when making cross-cuts in green concrete

Part #	Cat #
JOINTPRO-50	17145



# SKID PLATES

All Diamond Products Skid Plates Fit All Soff-Cut® Saws.

Only 6" and 14" Skid Plates Will Fit Diamond Products Saws.



### Skid Plate Features

- Stainless steel construction
- 1/8" thick bottom plate allows skid to be used for 2-3 blades before requiring replacement depending on the abrasive properties of the aggregate and the diameter of the blade
- Steel mounting pins that won't break or fail like some cast aluminum competitor mounts
- Mounted with a locking pin to keep the plate in place
- Fits both steel and cast skid plate saws



**ALWAYS CHECK SKID PLATE BEFORE SAWING!**  
 Look for wear at these highlighted areas on the bottom side of the skid plate. If the slot is no longer a straight line, you must replace the skid plate.  
 This wear is typically seen every 2 to 3 blade lives depending on the aggregate type.

### When Used with Hard Aggregate:

Blades in hard aggregate have shorter life so the skid plate will last longer. This holds true for diamond blades. They wear out faster, which leads to less skid plates being needed due to less abrasion wearing on the steel skid plate.

### When Used with Soft Aggregate:

Blades in soft aggregate last longer so the skid plates wear out with fewer blades. Blades specifications for soft aggregate are typically hard, which results in more skids plates being needed due to more abrasion on the steel skid plate.

## SKID PLATES-FOR .125 & .250 THICK BLADES

Description	.125 Part #	.125 Cat #	LIST PRICE	.250" Part #	.250" Cat #
Skid Plate for 6" and 8" Blades	2505236*+	40029	\$28	6011520*+	51726
Skid Plate for 10" Blades	2505237+	40038	35	6011523+	56358
Skid Plate for 12" and 13.5" Blades	2505238+	40039	43	6011526+	56636
Skid Plate for 14" Blades	2505239*+	42936	60	2505274*+	85782

\* For use on Core Cut saws. + For use on competition style saw.

**Skid plates for .375" and .500" thick blades available upon request.**

*Soff-Cut® is a registered trademark of Husqvarna AB (publ) and is in no way affiliated with Diamond Products Limited.*





**TRUE EARLY ENTRY™ System Components:**

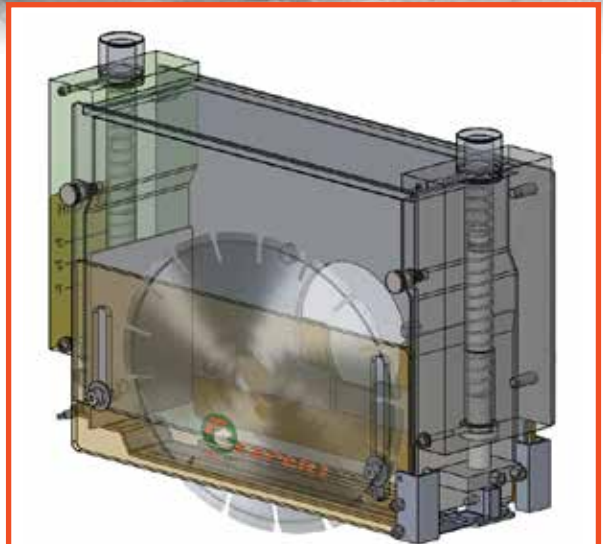
- First-Cut™ blade (2 quality grades - Basic & Expert)
- First-Cut™ saw with skid plate guard system
- Optimal Time of Cutting-Known as the **Control Zone™** (2 hours after finishing and before final set)

**WHAT ARE TRUE EARLY ENTRY™ CONTROL/RELIEF JOINTS?**

As concrete is placed and being finished, chemical reactions begin to take place causing the slab to increase in temperature. Stress, caused by shrinkage, begins to accumulate rapidly. At this time the concrete is looking for relief. If not relieved in a timely manner the concrete will relieve itself, resulting in random cracks appearing across the surface of the slab.

By placing **True Early Entry™** joints at the appropriate spacing (normally 10' to 12' apart) the concrete finds the relief its looking for and cracks directly beneath the cut.

The timing of **True Early Entry™** joints are critical! Controlling random cracking is all about the timing of the cut, not the depth of the cut. Cuts must be placed between the initial set and the final set of the concrete. This **CONTROL ZONE™** is the optimal cutting time to give concrete relief when it is looking for it the most.

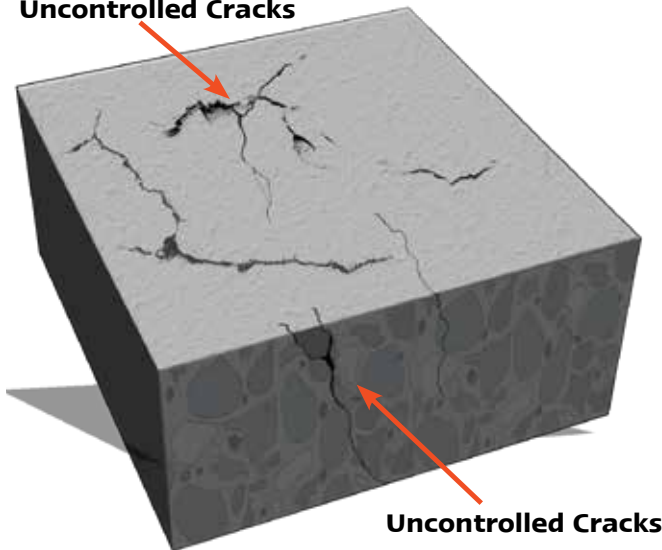


**First-Cut™ Skid Plate Guard System**

Our First-Cut saws utilize a skid plate guard system that protects concrete spalling during the cut. A spring-loaded skid plate holds it down and keeps aggregate from pulling out of the slab. The guard system is low-maintenance and heavy duty to withstand extended use on the job.

**Why You Need to Use the True Early Entry™ System**

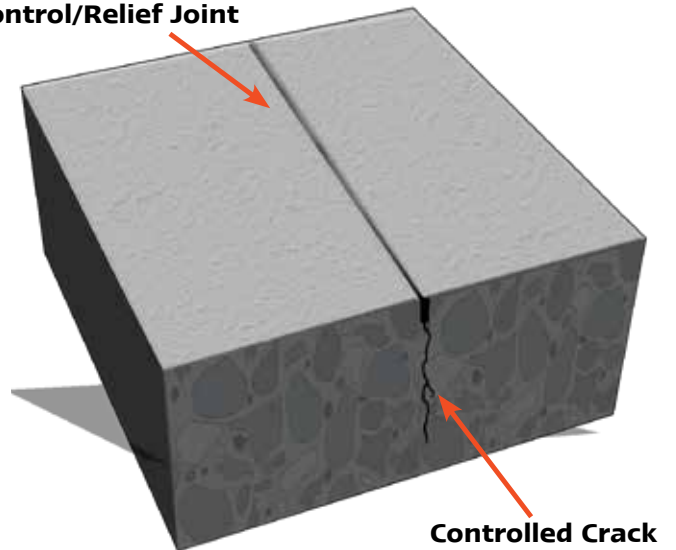
**Uncontrolled Cracks**



**Concrete Without Control/Relief Joint**

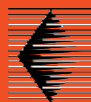
Without a control or relief joint made into the material, heat and cold aligned with curing can cause expanding and contracting of the concrete, creating uncontrolled cracks throughout. Those cracks will eventually create ruptures and sections that can pull apart from the rest of the material.

**Control/Relief Joint**



**Concrete With Control/Relief Joint**

Making a controlled cut in the concrete **CONTROLS** where the cracks appear. When this procedure is done in determined spaced sections, the damage and cracking is kept at a minimum which prolongs the life of the concrete slab.



# VACUUM & AGGREGATE INFO



HONDA GAS ENGINE!

DRY ONLY

INNOVATIVE ELECTRONIC TIMER!

## CV1900AV VACUUM

CFM - 1,105

Gasoline

HEPA FILTERS



Part of the Core Vac product line for dust removal

### FEATURES

- Designed for the contractor who requires a large amount of dust containment.
- Two primary filters that are pulsed clean every 6 seconds with a reversed charge of compressed air; ensuring a continuous vacuum.
- The easy to use bolt down strap makes the vacuum usable with any 30 gallon drum
- Winch system for easy container dumping instead of straps
- Heavy duty casters allow for easy mobility for dumping and transportation
- Offers a 5" hose allowing larger air volume and two additional 2" hose inlets for smaller tools
- Less filter cleaning and adaptability to all shrouded equipment

✓ **OSHA COMPLIANT**  
with our First-Cut™ System



MADE IN THE U.S.A.

### Vacuum Chart

Port Size	CFM	Inch Lift
2" - 5"	1105	3.0

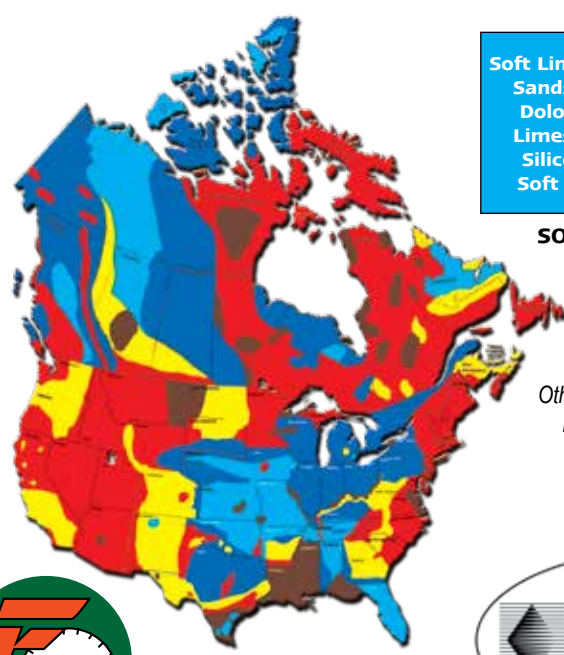
For Use on the CC190PRO-EE First-Cut Early Entry Saws

All testing has been completed in a controlled environment using an air velocity meter and a mechanical gauge measured at the neck of each vacuum. These figures should be used as a reference only.

### CV1900AV SPECIFICATIONS

Vacuum Hoses	5" x 15' standard with quick-release clamps
Compressor	2.5 CFM air cooled
Filtration	Special pleated cartridge
Wheels	Two 5" 200lb rubber Two 5" 200lb swivel caster
Height	59" (150cm)
Length	34-1/2" (88cm)
Width	28" (71cm)
Weight	375 lbs. (170kg)

CORE VAC CV1900AV DUST CONTAINMENT VACUUM		
Description	Part #	Cat #
CV1900AV gas vacuum for CC190PRO-EE with hoses - dry only	5801900	37624
Vacuum side cover plate attachment for CC190PRO-EE	2708358	80580
Vacuum adapter 3" to 5"	2504846	82102
HEPA Filter (requires 2 for CV1900AV)	2505797	40141
6 Mil Bag Liner (50 bags) for CV1900	2506170	83300



Soft Limestone  
Sandstone  
Dolomite  
Limestone  
Siliceous  
Soft Shell

SOFT

Pit Gravel  
Limestone  
Dolomite

MEDIUM SOFT

Med. Hard  
River Rock  
Med. Traprock  
Decomposed  
Granite  
Med. Crushed  
Gravel

MEDIUM

Granite  
Slate  
Traprock  
Basalt  
Quartzite

MEDIUM HARD

Hard Chert  
Quartz  
Flint Rock  
Hard River  
Rock

HARD

These are the basic aggregates found in the shown areas.  
Other types of aggregate can be found in many parts of the U.S. and Canada

### BLADE SPECIFICATIONS

FIRST-CUT SPECIFICATION	Aggregate Hardness (see map)
1000/2000	Hard
3000	Medium Hard
4000	Medium
5000	Medium Soft
6000	Soft



DIAMOND PRODUCTS LIMITED  
333 Prospect St., Elyria, OH 44035 U.S.A.

800-321-5336  
diamondproducts.com