



B85 BLUELIFT

ReachMaster launched the Bluelift line in North America in 2010, and since then this line of track-based compact aerial lifts has continued to set one record after another:

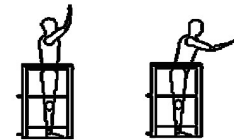
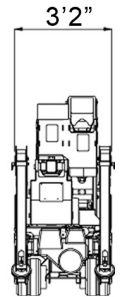
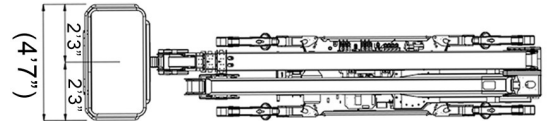
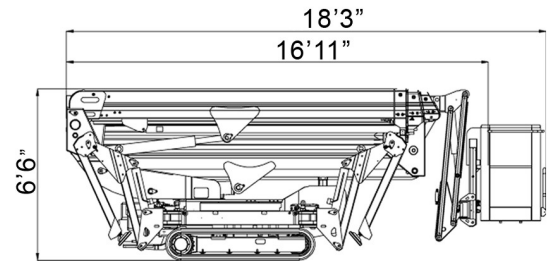
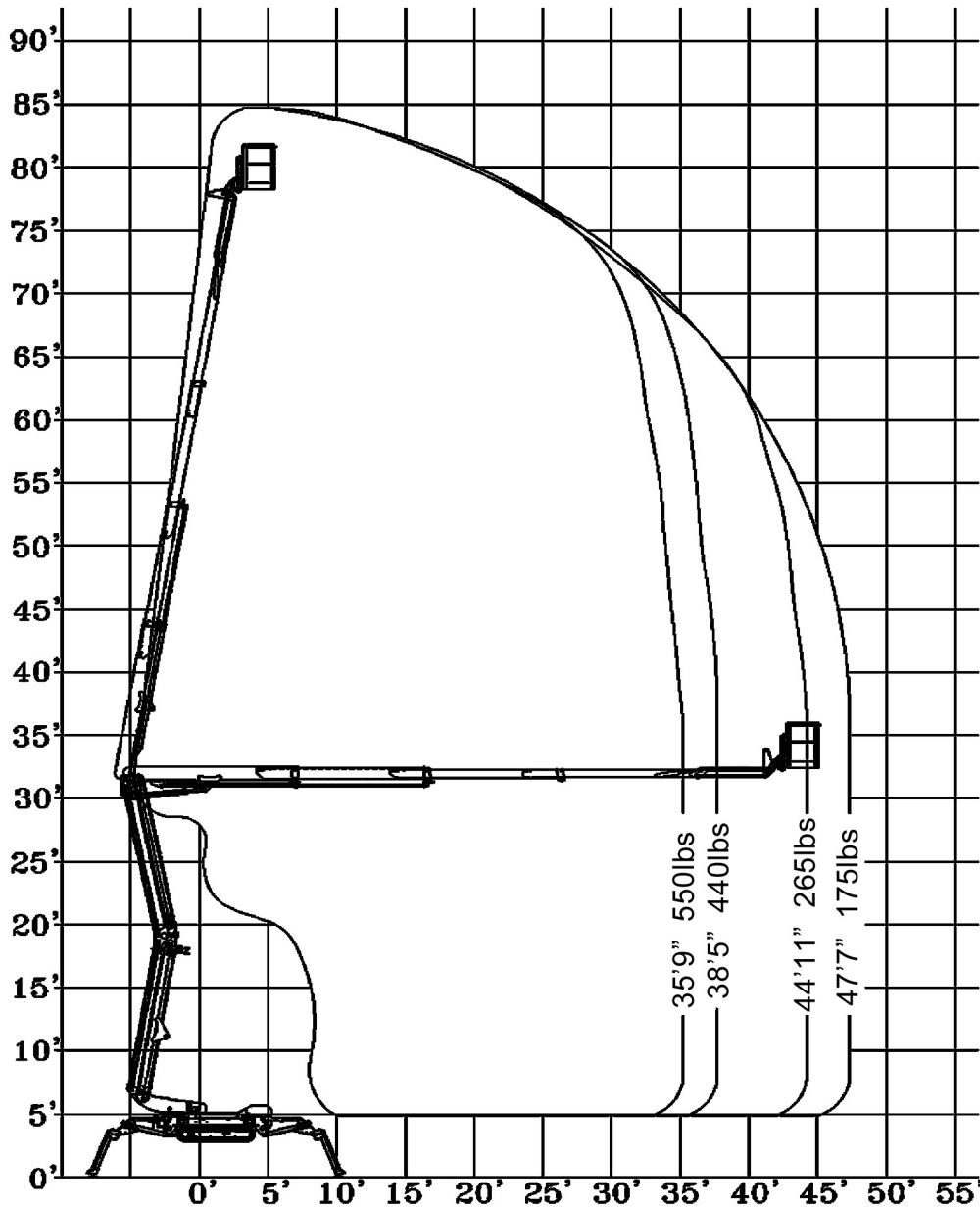
The first manufacturer in the world to

- offer a 72 ft. work height unit with an overall length of less than 15 ft
- feature a true hybrid option with combined lithium and combustion engine in this class of units
- offer the most narrow units in its class auto centering of boom, go-home features and many more operator aid functions

The latest new feature is an innovative electro-hydraulic system that will allow the operator to use two independent functions at the same time.

With working heights from 35 – 101 ft., single and double door access combined with hybrid power solutions, the Bluelift line offers an unmatched range of versatile lifts that can be used in- and outdoor. Applications such as general rental, window cleaning, building maintenance and tree care are just a few of the many tasks where the Bluelift line will offer a superior, safer and more efficient solution.

Maximum working height	85ft 5in
Maximum platform height	79ft 5in
Maximum outreach	47ft 7in
Lifting capacity	550 lbs
Basket size	4ft 3in X 2ft 6in
Basket rotation	+/-80°
Turret rotation	340°
Length (w/ basket)	18ft 3in
Length (w/o basket)	16ft 11in
Width (w/o basket)	3ft 2in
Height	6ft 6in
Weight	7599lbs
Max pressure, footplate	109 psi
Foot pad size (per pad)	48.69 sq in.
Max pressure under tracks	7.59 psi
Travel Speed	0.9 mph
110V drive motor	Standard
Honda gasoline engine	Standard
Hatz diesel engine	Optional
Lithium battery	Optional



WORKING PARAMETERS

Standard Equipment:

- Honda iGX390 engine
- Automatic outrigger setting
- Hetronic radio remote control
- Hetronic control fixed in basket
- Self stabilizing system
- 110V to basket
- Air/water to basket - 1 hose
- Track width adjusting system
- Set up on uneven surfaces
- Automatic turret center stop

Options:

- Hatz diesel engine
- Lombardi diesel engine
- Lithium battery